

HE HALI'A ALOHA

A FOND REMEMBRANCE



HE MEA HO'OHIWAHIWA NO



*Princess Abigail Kinoiki Kekaulike Kawānanakoa
and the Kawānanakoa Story*

KINOIKI KEKAULIKE

J. Kimo Alama Keaulana



Hiehie ka wahine he lani ali'i,
Dignified is the woman, a royal personage,

Ka beauty lua'ole o ke ao nei.
A beauty unequaled upon this earth.

Kaulana Hawai'i i ka nani o nā pua,
Hawai'i is famous for its beautiful flowers,

'O 'oe nō ia kau i ka heke.
You are the one above them all.

Onaona kou 'ala i o'u nei,
Your sweet fragrance reaches me here,

Noho mau i ku'u poli pumehana.
To nestle always in my warm bosom.

Ka nani o ke ānuenuē pipi'o i luna nou,
The beauty of the rainbow arches above just for you,

He lei kau i kou po'ohiwi.
A lei worn upon your shoulders.

Ha'ina ka inoa ua lohe 'ia,
Speak of the name so it may be heard,

'O Kinoiki Kekaulike he inoa.
Kinoiki Kekaulike is the name.



HER ROYAL HIGHNESS

PRINCESS ABIGAIL KINOIKI KEKAULIKE KAWĀNANAKOA

Ua Hala Ia Pua Ali'i Kawānanakoa

The Passing of a Royal Kawānanakoa Descendant and Senior Representative and Heir to the Kalākaua Dynasty

Her Royal Highness Princess Abigail Kinoiki Kekaulike Kawānanakoa passed away peacefully on December 11, 2022, at her Nu'uaniu home with her wife Veronica Gail Kawānanakoa at her side. Known fondly as "Kekau" by her closest friends and family, Princess Abigail was 96 years old.

"Abigail will be remembered for her love of Hawai'i and its people," said Veronica, "and I will miss her with all of my heart."

Princess Abigail was a distinguished member of the Royal Family of Hawai'i – The Royal House of Kawānanakoa – with its direct ties to Hawai'i's last two reigning monarchs, Their Majesties King Kalākaua and Queen Lili'uokalani.

Born in Honolulu on April 23, 1926, Princess Abigail was the daughter and only child of HRH Princess Lydia Kamaka'eha Lili'uokalani Kawānanakoa Morris and William Jeremiah Ellerbrock. At the age of five, the Princess was legally adopted as the malu hānai of her maternal grandmother, HRH Princess Abigail Wahiika'ahu'ula Campbell Kawānanakoa, who lovingly raised her in the regal atmosphere of Hawaiian nobility.

Elevated to the generation of her mother, Princess Abigail accepted her birthright and obligation as a daughter and granddaughter of The Royal House of Kawānanakoa to preserve the dignity and legacy that is the Royal Family of Hawai'i.



Princess Abigail's formative years were guided by her grandmother who valued immensely the importance of a proper education for her children and grandchildren. Princess Abigail attended the prestigious Lanai School on Kewalo Street in Makiki under the academic supervision of Miss Lucy Maxwell of Boston. One of her oldest and dearest classmates was James Henry Keko'olani Pflueger.

Princess Abigail attended Punahou School and as a student in the ninth grade, at age 14, was named the Junior Academy winner at the 1939 annual Thurston Swim Meet where she tallied seven points while breaking four records in her division. She won the 100-yard freestyle in 1 minute, 14.6 seconds and also took second place in the Diving Competition garnering 32.96 points. She also won the 25-yard crawl and the 25-yard backstroke. An avid surfer, Princess Abigail also enjoyed surfing Sandy Beach with her long-time surfing confidante, Edward Stroup.

During World War II, Princess Abigail attended the Shanghai American School in China, where she resided with her mother Princess Lydia Kawānanakoa and her stepfather, noted war correspondent Clark Lee.

Princess Abigail graduated from the Notre Dame School in Belmont and attended the Dominican College in San Rafael and the University of Hawai'i.

Remembering Kekau

There were many sides to Princess Abigail.

She was from an early age made aware of her obligations to the Hawaiian people and over the years many of her charitable works took the form of support to Hawaiian individuals and families. This support ranged from underwriting education and paying for medical expenses including the travel and living expenses of family members who were ill and being treated on the mainland, to supporting Hawaiian artists in hula, woodworking and featherwork. Almost all of this support was given with little or no attention or publicity.

Princess Abigail was also very proud of her lineage, both her overall family lineage that traces back to Hainalau and her immediate family including the Campbell lineage. She underwrote studies and research of Hawaiian culture and heritage, and she sought always to protect the physical manifestations of our culture and heritage.

In horses, Princess Abigail found a special calling. She turned out to be an accomplished equestrienne at winning races, breeding champions and supporting the ethical treatment of animals. In this context, she had to be successful on her own. Neither her name nor her wealth were impressive to the quarter horse racing community.

Finally, Princess Abigail loved music. She had favorite songs that brought her joy or linked to a special place or person. And some of the songs were about her. On the inside cover of this booklet is a Mele Inoa, a name song, composed for Princess Abigail by her friend, Kimo Alama Keaulana. It was lovingly performed by him at her funeral service at Mauna 'Ala on January 23, 2023.

Her Lineage



The Kawānanakoa Genealogy Chant

(HE MANU HA'I KŪPUNA NO HAINALAU)

As Princess Abigail's hearse entered the grounds at 'Iolani Palace on January 22, 2023, to lie in state in the Throne Room, her Hainalau genealogy was chanted by Manu'aikohana Boyd. He did the same chant at her funeral service on January 23, 2023, at Mauna 'Ala.

This ko'ihonua (genealogy chant) was composed for Prince David Kawānanakoa as a tribute to his lineage. That lineage (and that of his brothers, Jonah Kūhiō Kalaniana'ole and Edward Abnel Keli'iahonui) is highly unusual in Hawai'i because it links them to the royal lineages of all four major islands: Kaua'i, Maui, O'ahu and Hawai'i Island.

The title of this ko'ihonua, in fact, speaks of the priest (manu ha'i kūpuna) telling of the ancestors. The chant's line "O ka ho'owiliwili, ho'ohihia piko o nā ali'i" speaks of the twisting and entangling lines of this royal family.

This same genealogy was chanted for Prince David at his services in 1908, at his widow Abigail Wahiika'ahu'ula's services at her home in 1945, and for Prince Kūhiō at his services at his burial at Mauna 'Ala in 1922. Princess Abigail would often ask Manu to chant this lineage at important occasions and she specifically wanted him to chant it for her at the services on her passing.



**HIGH CHIEF DAVID KAHALEPŌULI PI'IKOI &
HRH HIGHNESS MARY KINOIKI KEKAULIKE**

HE MANU HA‘I KUPUNA NO HAINALAU



He manu ha‘i kupuna no Hainalau,
No Puna, no Hema, no ka welowelo ali‘i,
No ‘Ahukini-a-La‘a o La‘amaikahiki,
Na Kamahano, kū moku a Luanu‘u,
‘O Kūkona-a-La‘a, i la‘a i ke kapu,
I ke kapu hinu ali‘i o Manokalanipō,
‘O Kalanikaumakamano o Manohili,
I hili, i lino, na Kahakuakāne,
Na Kahakumakapāweo a Kalanikukuma,
‘O ‘Ilihiwalani, ka hiwa pa‘a o nā ‘ali‘i,
‘O Kauhiahwiwa a Kāneiahaka,
‘O ka haka pūneki e Kapulaukī,
‘O ke kī pe‘ape‘a kapu o Kulu‘ina,
‘O ka ‘ina-uli hana pa‘a i ka papa ko‘a,
I ka papa ‘apu‘apu o Lonoikahā‘upu,
Hā‘upu Kalani e lele Kaumehe‘iwa,
He ‘iwa, he manu lele ho‘ānoano,
‘O ka ho‘āno o ke kapu Kamakahēlei o ke ‘ali‘i,
‘O Kā‘eokūlani, ‘o ka iho kū manawa,
‘O ka ho‘owiliwili, ho‘ohihia piko o nā ali‘i,
Puka Kaumuali‘i ke ahi lapalapa,
Ke kuku‘ena e wela ai ka maka o Ulunui,
Kalo ‘ai ku‘eku‘e o Kūkaniloko,
He mā‘ū lani hanu honi palai no Halemano,
‘O nā ‘ali‘i kapu ia o ka pali Līhu‘e,
‘O Kīkē-nui-a-‘Ewa o ‘Ewa-a-La‘akona,
‘O ka ‘ewa ia i pāiki ke kino, i kino‘ole,
‘O Kūhiō i ke kapu o Pine,
Puka Kapi‘olani wahine i ka ‘iu,
Puka Kapo‘oloku o Po‘omaikelani,
Puka Kekaulike Kinoiki, kino pālanaiki,
I noho iā Kahalepōuli, pū ‘eki a ke aloha la e,
Hānau Kawānanakoa, ke koa kumu‘ole o Kahihikolo.

THE PRIEST RECITES THE ANCESTRY OF HAINALAU



The priest recites the ancestry of Hainalau,
About the chiefly strain of descent of Puna and Hema,
Concerning 'Ahukini-a-La'a of La'amaikahiki,
By Kamahano, the district rule to Luanu'u,
Kūkona, son of La'a, made sacred by the tabu,
By the anointing tabu with oil of Manokalanipō,
Kalanikaumakamano of Manohili,
Braided into the line of Kahakuakāne,
By Kahakumakapāweo to Kalanikukuma,
'Ilihiwalani, to secure the esteemed sacredness of the chiefs,
Of Kauhiahwiwa to Kāneiahaka,
The spaces (in a lineage) filled by Kapulaukī,
Of the sacred pe'ape'a criss-cross ti leaf thatch of Kulu'ina,
Of the dark sea urchin, that takes firm hold of the reef,
In the rank (papa) of Lonoikahā'upu,
Memory of the Chief that soars like the 'iwa bird, Kaumehe'iwa,
The frigate bird, whose flight is revered,
Reverence for the tabu of Kamakahalei, of the chiefess,
The chiefess of Kā'eokūlani, the center of the power of rule,
the heart of the island kingdom,
The twisting, tangling of the navel cord of the chiefs,
Born was Kaumuali'i, the flashing of fire,
The flaming rays heating the face of Ulunui,
The edible red taro of Kūkaniloko,
Chiefs who scent the perfume of palai fern of Halemano,
These are the sacred chiefs from the cliffs of Lihu'e,
Of Kikē-nui-a-'Ewa of 'Ewa-a-La'akona,
This is the 'ewa whose body was frail,
Kūhiō in the tabu of Pine,
Born was Kapi'olani wahine at the zenith,
Born was Kapo'oloku of Po'omaikelani,
Born was Kekaulike Kinoiki, of small trim figure,
Who married Kahalepōuli, bound in love,
Born was Kawānanakoa, the trunk-less koa of Kahihikolo.

Royal Lineage

Princess Abigail's royal lineage is distinguished and ennobled by courtesy title as the eldest granddaughter of His Royal Highness Prince David La'amea Kaluaonālani Kahalepōuli Pi'ikoi, surnamed Kawānanakoa. He, along with his young brothers Edward Abnel Keli'iahonui and Jonah Kūhiō Kalaniana'ole, were the recipients of "Letters Patent...issued under the Great Seal of the Kingdom" by His Majesty King David Kalākaua, "granting the dignity of Prince to their Royal Highnesses...with precedence under the title of Royal Highness next to..." their mother, "Her Royal Highness Princess Mary Kinoiki Kekaulike and above all other subjects."

After the passing of HRH Princess Mary Kinoiki Kekaulike in 1884, Her Majesty Queen Kapi'olani applied for and received Letters of Guardianship over the persons and estates of her youngest sister's three children: HRH Prince David Kawānanakoa, HRH Prince Edward Abnel Keli'iahonui and HRH Prince Jonah Kūhiō Kalaniana'ole. Henceforth, these three Princes took up residence in 'Iolani Palace with King Kalākaua and Queen Kapi'olani and constituted The Royal Family of Hawai'i.



PRINCE DAVID KAWĀNANAKOA,
PRINCE EDWARD ABNEL KELI'IAHONUI AND
PRINCE JONAH KŪHIŌ KALANIANA'OLE

KĀUA I KA NANI A'O HILO

Mary Kinoiki Kekaulike-II
Translation by Mary Kawena Pukui



*Kāua i ka nani o Hilo,
I ka ua loloku o Hanakahi.*

You and I amidst Hilo's charms,
In the pouring rain of Hanakahi.

*'Akahi nō ko'u manene,
I ka me'eu ho'i o ko'u oho.*

It is the first time I've been thrilled,
Till I feel the 'creeps' through my scalp.

*He 'ulāleo paha na ka 'Iwi,
Pū'ā maila i Haili.*

Perhaps caused by the distant voice of an 'Iwi,
That bursts into song at Haili.

*Ilihia i ka leo o ka mamo,
Ke 'ikuā maila i 'Ōla'a.*

I am delighted by the voices of the mamo,
That sing in chorus in 'Ōla'a.

*Ua la'a ia pua i 'ane'i,
Eia ma ko'u kī'aha.*

The flower is reserved here,
It is in my vessel.

*Ua ho'olawa 'ia e Li'a,
E nā lehua i Pana'ewa.*

Gathered together by Li'a,
Are the lehua of Pana'ewa.

*E kuhi ana nō paha 'oe,
Ho'okahi hālau i a'o ai.*

Perhaps you think that art is taught,
In one school.

*I 'ike ai nā mea hana,
'O ka puke ho'onui 'ike.*

So that the working can be seen,
In a book that increases knowledge.

*He makau hala 'ole kēia,
Ua lou 'ia e ka i'a nui.*

This fish hook that doesn't fail,
It catches big fish.

*Ua ale 'ia ka'u maunu,
E moano nui i ka lehua.*

My bait is swallowed,
By the big red moano.

*Ua pa'a i ka lina pāwalu,
I mali 'ia ke aho makali'i.*

It is caught on an eight-ply line,
Its bait tied with a fine cord.

*E ō e Kalani kū kahi,
'O ka hiku kapu o nā lani.*

Answer, O one and only ruler,
The seventh of the kings.



PRINCESS MARY KINOIKI KEKAULIKE

E NIHI KA HELE

King David Kalākaua

Kekau's favorite song about Kapi'olani



*E ka moana nui kai hohonu
E lana mālie kou mau 'ale
E ka makani nui ikaika
E pā aheahe mālie 'oe*

Great ocean, deep sea
Let your stirring moods be gentle
Great and mighty wind
Blow gently

*Hui:
E nihi ka hele, mai ho'opā
Mai pūlale i ka 'ike a ka maka
Ho'okahi nō makamaka
A hea mai 'o ka lani a e kipa*

Chorus:
Tread softly, don't touch
Don't be overwhelmed by what you see
True friendship is love
When royalty calls one to visit

*'Ike iā Kaleponi he 'āina anu
Ke hau ho'okuakea i ka 'ili
Lamalama i ka 'ili o ke kama
Ka wahine i ka 'iu o luna*

California, see, it is a cold land
Snow that bleaches the skin
Glowing skin of the Princess
Lady of high station

*E hele me ka poina 'ole
E huli ē ke alo i hope nei
Eia kō lei kalaunu
'O ka 'ōnohi o Hawai'i*

Go and do not forget
To come back again
Here is your crown lei
Hawai'i is the heart



HER MAJESTY
QUEEN JULIA NĀPELAKAPUOKAKA'E KAPI'OLANI

LEI LOKE O KĀWIKĀ

Mary J. Montano | Peter Kalani



Hō'okahi nō 'oi o ke kaona
There is one who is the fairest in our famous town

'O ka lei pua loke o Kāwika
David's wreath of roses

Ua hele wale ā nohea
It is so very beautiful

I ka pē 'ia o ka Tuahine
Drenched by the Tuahine rain

Hui (chorus):

'O ka 'oi nō ia o ka la'i
It looks so very delicate

Ke kuini noho i ke onaona
Like a queen surrounded by fragrance

Kini i ka pu'uwai pumehana
Held in admiration by many hearts

Lei hō'omāhie ā ke kupa
This lovely wreath to adorn the native son

Na ka hanu 'ā'ala o pua loke
The fragrant breath of the rose

Hoapili ka lehua kū moku
Companion of the island lehua

I poló'ai a'e nā malihini
That invites the visitor

Kipa iā Kuaihelani home
To come to Kuaihelani home



HIS MAJESTY
KING DAVID LA'AMEA KAMANAKAPU'U MAHINULANI
NALOA'EHUOKALANI LUMIALANI KALĀKAUA

KE ALOHA O KA HAKU QUEEN'S PRAYER

Queen Lili'uokalani



*'O kou aloha nō,
Aia i ka lani,
A 'o kou 'oiā'ī'o,
He hemolele ho'i.*

Oh! Lord thy loving mercy,
Is high as the heavens,
It tells us of thy truth,
And 'tis filled with holiness.

*Ko'u noho mihi ana,
A pa'ahao 'ia,
'O 'oe ku'u lama,
Kou nani, ko'u kō'o.*

Whilst humbly meditating,
Within these walls imprisoned,
Thou art my light, my haven,
Thy glory my support.

*Mai nānā 'ino 'ino,
Nā hewa o kānaka,
Akā, e huikala,
A ma'ema'e nō.*

Oh! Look not on their failings,
Nor on the sins of men,
Forgive with loving kindness,
That we might be made pure.

*Nolaila e ka Haku,
Malalo o kou 'ēheu,
Kō mākou maluhia,
A mau loa aku nō.
Amene*

For thy grace I beseech thee,
Bring us neath thy protection,
And peace will be our portion,
Now and forever more.
Amen



QUEEN LYDIA LILI'U LOLOKU WALANIA
KAMAKA'EHA LILI'UOKALANI

Campbell Heritage

Princess Abigail is the eldest great-granddaughter of James Argyll Campbell, pioneer sugar magnate, landowner and millionaire, and his second wife, Abigail Kuaihelani Ma'ipinepine, an ali'i descendant of the Royal Houses of Pi'ilani, King of Maui, and of Waipi'o's Liloa, King of Hawai'i Island.

At the age of 13 years, the young Scotsman James Campbell left his home in Londonderry, Ireland and stowed away aboard a lumber schooner bound for the Canadian province of New Brunswick. Campbell's seafaring adventures would take him to ports in New York, New Bedford, to the South Pacific, to the shores of Tahiti and Hawai'i.

While in the South Pacific, Campbell survived a shipwreck, an encounter with cannibals, and a native rebellion in Tahiti against the French.

Campbell arrived at Lahaina, Maui, in 1850 and with great fortitude, perseverance and genuine talent, turned hard-earned opportunities into one of Hawai'i's great sugar plantations – the genesis of Hawai'i's preeminent 3.8-billion-dollar holding company known today as The James Campbell Company, LLC.

Abigail Kuaihelani Ma'ipinepine Campbell was a royalist and trusted confidante of Hawai'i's last ruling monarch, Her Majesty Queen Lili'uokalani. In 1897, Abigail Campbell, along with Emma Nawahi, as members of the Women's Hawaiian Patriotic League, traveled throughout the Hawaiian Islands collecting 21,269 signatures, representing 95 percent of the Native Hawaiian adult population, for the "Ku'e Petitions," a native protest against the annexation of Hawai'i by the United States.



**JAMES ARGYLL CAMPBELL &
ABIGAIL KUAHELANI MA'IPINEPINE CAMPBELL**

Margret Campbell

September 26, 1880-July 23, 1882

Abigail Wahiika'ahu'ula Campbell

January 1, 1882-April 12, 1945

Alice Mabel Kamokilaikawaiowailuanuihoano Campbell

March 17, 1884-October 23, 1971

James Kalanikini Campbell Jr.

March 17, 1886-March 23, 1889

Ethel Muriel Kuaihelani Campbell

November 28, 1890-March 19, 1951

Royalist Madeline La'akapu Campbell

May 12, 1893-February 29, 1896

Mary Beatrice 'Umi'ulaika'ahumanu Campbell

October 12, 1895-January 21, 1987

Kealoha'aina Campbell

August 12, 1897-August 12, 1897

WAHIIKA'AHU'ULA

Ruth Lilikalani | Charles E. King



He inoa kēia nou e Kalani
This is a praise for you, o Princess

E ka u'i nohea o Hawai'i nei
Lovely beauty of Hawai'i

'O 'oe nō ka heke i ka u'i 'ike
You are the greatest person in my sight

'O ka helu 'ekahi o ke onaona
Number one in sweetness

Ua ka'apuni au a puni Kaleponi
I have gone all around California

Ua 'ike i ka nani o American Beauty
And have seen the American Beauty

'O 'oe nō ka heke i ka'u 'ike lā
To me, you are the greatest

Ka hau nani o Hawai'i nei
The beautiful snow of Hawai'i

Nāna e haulani o Hale Ali'i
She will beautify the palace

Ka paepae kapu a Līloa
The sacred platform of Līloa

Ha'ina ka puana i lohe 'ia
This ends my praise that all may hear

'O Wahi-i-ka-'ahu'ula he inoa ē
The name of Wahi-i-ka-'ahu'ula

Wahiika'ahu'ula is the middle name of Princess Abigail's grandmother.



**PRINCESS ABIGAIL WAHIIKA'AHU'ULA
CAMPBELL KAWĀNANAKOA**



PRINCE DAVID KALUAONĀLANI KAHALEPŌULI
PI'IKOI KAWĀNANAKOA


The Passing of Prince David Kawānanakoa

Upon the passing of Prince David Kawānanakoa on June 2, 1908, the Hawaiian language newspaper Nupapa Kuokoa published a series of songs that honored the Prince. All were printed in the Hawaiian language only.

The songs were sung by the Lei Mamo group as the body of the Prince lay-in-state at his home and later at 'Iolani Palace.

Translations by J. Kimo Alama Keaulana and Edwin Mahi'ai Copp Beamer (except as noted) follow:

HRH Prince David La'amea Kawananakoa Kahalepouli Piiko



Ke Kilohana Pookela no ka Lehui Hawaii.

NOV 1911-1912
HONOLULU, H. I. MARSH, 1212-41, 42
NOV 1911-1912

[Source: Nupapa Kuokoa, Poalima (Friday) June 26, 1908, Buke (Vol.) 43, Helu (No.) 26, Pg. 4, c. 2-3]

<p>HE MAU MELE NO KAWANANAKOA.</p> <p>O ka mele maialo iho nei, he mau mele la i himehime a ka hui Lei Mamo i ka wa e waiho ana ke kinowaiwai o ke Keikiakihi Kawananakoa ma kona home, a pela pu hoi i ka wa e waiho ana ma ke kema kelaunu o ka Hale Mana Hoooko.</p> <p>He aloha ihailaha, Nō kuu haku ahi, I tūia iho nei, I ka polikus a Kane, Ua ike aku la paha oe, I ua mau kupuna, Kauamaha iusiu hoi e.</p> <p style="text-align: center;">HUI.</p> <p>E o e ka Lani o ka lua o na Lani, Ua hala i ke ala hol ole mai, Moe hookahi kihi o ka aina, Hete mahaikihi aloha i ke kanaka.</p> <p>He mimiti oi, E o hane he aloha kua, Nou no e Kawananakoa, Aia ka hui i Halaola, Ka pua hui o Makauiku, He hui ke maiani a ke aloha, He kunoa ka awihi ana mai, Pehea aku nei la o Puna, Ka iaua e waiho la, Eia e ka maui i ka hane, I ke palakulu hoopopou, Ka pilina a Kahoowai, E o e ka lua o na Lani, Kawananakoa ua hala.</p> <p style="text-align: center;">HUI.</p> <p>Ua mae e ka nani a o ka lehua,</p>	<p>Ua mae e ka nani a o ka lehua, Ka lei hihwaihwa a o Hawaii, Ua hoepo aku ma Sitouepou, I ka mae kau mos a ka hoolio, A he hihwaihwa oe na ka lahuli, A he hihwaihwa nei ke aloha, He aloha ke leo i ka pane mai, I ke kaukau mai me ka waimaka, Ekeia no pua kau i ka hano, Na ipe hookulu i ka puawai, Ua maui i ka hana o Kalepout, Ka opou ike o ke kelaunu, Na ka Manakula la i hii mai, Ka ukama iusiu a ka lahuli, Kahiko ahuaie o Pualetani, Kahiki e pueho i ka makani, Hea aku makou e o mai oe, Kawananakoa ua hala loa.</p> <p style="text-align: center;">HUI.</p> <p>I aloha la no Hanauna, Ko halelana ku i ke kai, Aoha ala e hiki ai, Aia ke ala i na iuna, Alo ana o ke kai ahehu, Alo ana o ka iha o ka waa, Ke kupua nei o ka moana, He aloha he aloha pua ole, Nou no e ka weku lani.</p> <p>I aloha la no o Kalia, Ko kai nei au ai, A oia i alo ai, Me ko hua i ka iwea, Ua weka ku lima o ke aloha, Ke iusiu nei ka pili.</p> <p>I aloha la no o Apua, Ko hale loto moe iau nio, A oia i moe ai, Me Kalamoi o Kuakamanoani, Ike wale aku hoi la oe, Ia Keiani nui Lani Leamae, Noho ana i ka paha kapu, I ka paepepe lani oia, No iuna o ka weku lani, Ua hala ua weku lani.</p> <p style="text-align: center;">HUI.</p> <p>Ke nipo nei Wahiakahuia, A heaha kau hala e ka Lani, E paluku nei i ka hoopou, Hoi mai e ko kapu lani.</p>	<p style="text-align: center;">HUI.</p> <p>E maui e ka Lani nui e, E hoi e noho i ke kapu lani, E maui e ka Lani nui e, Aia hoi aia mai ei.</p> <p style="text-align: center;">HUI.</p> <p>Ke hi Liliulani e, Ke go nei i ka eha lani ole e, E paluku nei i ka hoopou, Hoi mai e ka Lani e.</p> <p style="text-align: center;">HUI.</p> <p>Auhua wale oe e ka mahemake, E hoomae nei i kuu kino, Kuu kino ka i ahe aku i ke auu, Ka moana kai anu hanapanapa, Pukui ius i ka iii o ke kai, Kaele hewa i ka ohukae, Awele mai nei hoi ka moana, A he kauoa se paha ko mua, Imua a i hope kahii mamoa, I ke ka-un mai a ka hua iusiu, O ka hua oe pili ka manene, Hoi ka hana heaha se hea, O Kalamipuke ka i manauhi la, Akahi hoi au n ike maha, I ke kai pahi o Pualetani, Hoihohu ana i ka aonee, E o e kuu lei kuu kama, O ka lua o na Lani ua hala loa.</p> <p style="text-align: center;">HUI.</p> <p>Nee mai nei o Kaula, Ea i ka mole o Lehua, Aia maui Niiuau, Piliwale mai no Lehua, Ua ike no a ike, Ea me Keiki o Kauakahi, I ka iusiu i ke hui, Hoihi ana i ka aonee, I ka oha la o ka Haha, Hoiu akahi la no i iusiu, O ka kinohiki la i Hama, Nana i hoolalele maui maui, Ka hahala o Kealia, I aloha hoi i ka Paepepe, Mau ai na kinohiki,</p> <p style="text-align: center;">HUI.</p> <p>Hanohano wale no Waimae, O ka ua kapa a Hoa, A he hua no oe na'a mau, Nu manowai etia, A ma mamu e pahi mai, E o kuu Lei kuu Kama.</p>
---	--	---

HE ALOHA LIHALIHA



*He aloha lihalihā,
No ku'ū haku ali'i.
I niau iho nei,
I ka polikua ā Kāne.
Ua 'ike aku la paha 'oe,
I ou mau kūpuna,
Kaumaha lu'ulu'ū ho'i e.*

*Hui:
E ō e ka Lani o ka lua o nā Lani
Ua hala i ke ala ho'i 'ole mai.
Moe ho'okahi kia'i o ka 'āina,
Hele makahiki aloha i ke kanaka.*

*He milimili 'oe,
Ā ka lāhui e hi'ipo'i ai,
'Oiai nā lā e kūmākena nei.
Ua 'ike aku nei paha i ou mau Lani,
Kaumaha lu'ulu'ū ho'i e.*

Love is so heartsick,
For my royal chief.
That has just peacefully passed,
To the invisible beyond of Kāne.
Perhaps you have met with,
Your ancestors,
Sadness burdens one so heavily.

Chorus:
Respond, oh Chief, the second of the heavenly ones,
Who has passed on to the path of no return.
The one who watches over the land slumbers alone,
Gone is the one of timeless love for the people.

You are so admired,
By the citizenry who cherish you,
During the days of mourning here.
Perhaps you have met with your royal ancestors,
Sadness is such a heavy burden.



HER MAJESTY QUEEN KAPI'OLANI &
PRINCE DAVID KAWĀNANAKOA

HE 'UHANĒ HE ALOHA KĒĪA



He 'uhane he aloha kēia,
This is a loving lament for the spirit,

Nou nō e Kawānanakoa,
For you, Kawānanakoa,

Aia ka 'īini i Haiola.
The one so desired at Haiola.

Ka pua hau o Maka'ukiu.
The hau blossom of Maka'ukiu.

He kiu ka makani a ke aloha,
The kiu is a wind that comes of love,

He kūnou ka 'āwihi 'ana mai.
As it bends and winks on its way.

Pehea aku nei ia 'o Puna,
How is Puna doing?

Ka laulā e waiho la,
The broad expanse that spreads wide,

Eia e ka nani i ka hene,
Here is where beauty lies in its slopes,

I ke kalukalu ho'oiipo.
In the romancing of the kalukalu.

Ka pilina a Kaho'iwai,
To the incline of Kaho'iwai,

E ō e ka lua o nā Lani,
Answer, the second of the royal ones,

Kawānanakoa ua hala.
Kawānanakoa has passed away.



PRINCE DAVID KAWĀNANAKOA

UA MAE E KA NANI A'O KA LEHUA



Ua mae e ka nani a'o ka lehua,
The beauty of the lehua has faded,

Ka lei hiwahiwa a'o Hawai'i,
The precious lei of Hawai'i,

Ua hōipo aku me Niolopua
Wooing Niolopua

I ka moe kau moe a ka ho'oilō.
In summer's sleep and in the slumber of the wet season.

A he hiwahiwa 'oe na ka lāhui,
You are the precious one of the nation,

A he hi'ihī'ialo na ke aloha.
Held in the embracing arms of love.

He aloha ko leo i ka pane mai,
So loved is your voice when it answers,

I ke kaukau mai me ka waimaka.
To lamentation's chant with tears.

'Ekolu nō pua kau i ka hano,
There are three blossoms held in esteem,

Nā ipo kūkolu i ka pu'uwai.
The triple darlings in my heart.

Ua nalo i ka hau a'o Kaleponi,
That has vanished in the snow of California,

Ka 'ōpu'u liko o ke kalaunu.
The gemstones of the crown.

Na ka Manakūlia la i hi'i mai,
Carried by the [S.S.] Manchuria,

Ka ukana lu'ulu'u a ka lāhui.
The burdensome baggage of the nation.

Kāhiko 'ahu'ula o Pualeilani,
The feathered cloak that adorns Pualeilani,

Kāhili e pulelo i ka makani.
The feathered standard that waves in the breeze.

Hea aku mākou e ō mai 'oe,
We call, may you answer,

Kawānanakoa ua hala loa.
Kawānanakoa who has gone forever.



PRINCE DAVID KAWĀNANAKOA

I ALOHA 'IA NŌ HANAUMA

*I aloha 'ia nō Hanauma,
Ko halelana kū i ke kai.
A'ōhe ala e hiki ai,
Aia ke ala i nā lima.
Alo ana o ke kai 'ehuehu,
Alo ana o ka ihu o ka wa'a,
Ke kūpuna nui o ka moana.
He aloha he aloha pau 'ole,
Nou nō e ka wēkiu lani.*

So loved is Hanauma,
For your houseboat upon the sea.
There is no pathway to come upon.
For the way is in your hands.
Upon the billowy sea,
Appearing at the bow of the vessel.
[You are] the great wondrous one of the ocean.
So here is love an endless love.
For you, the zenith of the heaven.



I ALOHA 'IA NŌ 'O KALIA

*I aloha 'ia nō Kālia,
Ko kai āu i 'au ai.
A 'olua i 'alo ai,
Me ko hoa i ka lā wela.
Ua wela ka lima o ke aloha,
Ke lauahi nei ka pili.*

So loved is Kālia,
Where the sea was yours to swim.
Where the both of you were,
With your companion on a very warm day.
The hand of love lends itself,
To one's sole interest.



I ALOHA 'IA NŌ 'O 'ĀPUA

*I aloha 'ia nō 'o 'Āpua,
Ko hale lolo malu lau niu.
A 'olua i noho ai,
Me Kalani 'o Kuakamanolani.
Ike wale aku ho'i hā 'oe,
Iā Kalani nui Lani La'amea.
Noho ana i ka pahu kapu,
I ka paepae lani o luna,
No luna o ka wēkiu lani,
Ua hala ua wēkiu lani.*

Surely loved is 'Āpua,
For the canopy of coconut fronds.
Where the both of you were,
With Kalani Kuakamanolani.
Where one could easily recognize.
The high chief La'amea.
Sitting upon the sacred trunk,
Upon the royal threshold above,
High above the summit of heaven,
For the highest of royalty has passed away.



PRINCE DAVID KAWĀNANAKOA

E MALIU MAI E KA LANI NUI



Ke nipo nei Wahiika'ahu'ula,
Wahiika'ahu'ula drowsily is yearning,

A he aha kāu hala e ka Lani?
And what fault is it of yours, oh Heavenly one?

E pāluku nei i ka houpo,
Beating in the core of one's chest,

Ho'i mai e ko kapu lani.
Is the hope that your sacred chief will return.

Hui (chorus):

E maliu [mai] e ka Lani nui e,
Turn towards us, oh Heavenly one,

E ho'i e noho ike kapu lani.
Return to remain in your royal sanctity.

E maliu e ka Lani nui e,
Turn towards us, oh Heavenly one,

Ala ho'i! Ala mai e!
Arise! Arise, now!

Ke li'i Lili'ulani e,
Queen Lili'uokalani,

Ke uē nei i ka 'eha lani 'ole e.
Weeps for the chief who is no more.

E pāluku nei i ka houpo,
Beating in the core of one's chest,

Ho'i mai e ka Lani e.
Is the hope that the Royal one will return.



PRINCE DAVID KAWĀNANAKOA &
PRINCE JONAH KŪHIŌ KALANIANAʻOLE

KA MAKEMAKE



*'Auhea wale 'oe e ka makemake
E ho'onaue nei i ku'u kino.
Ku'u kino kā i 'alo aku i ke anu,
Ka maona kai anu hānupanupa.
Pūku'i lua i ka 'ili o ke kai,*

Kālele hewa i ka 'ōhuku'ale.

*'Ale'ale mai nei ho'i ka moana,
A he kaiko'o a'e paha ko mua.
I mua ai hope kahi mana'o,
I ke kā-ua mai a ka hoa luhi.
'O ka hoa 'oe pi'i ka manene,
Holo ka hana he aha a'e kēia.
'O Kalanipuka kā i manuahi 'ia,
'Akahi ho'i au a 'ike maka,
I ke kai puhi o Papalooa,
Holuholu ana i ka 'aeone.
E o e ku'u lei ku'u kama.
'O ka lua o nā Lani ua hala loa.*

Where are you, oh the one that is longed for.
That makes my being tremble.
My person that braved the cold,
The ocean of cold, surging seas.
That makes one double up upon the surface
of the sea,

With nothing to brace on in overwhelming
waves.

The ocean is choppy,
Perhaps up ahead is a raging sea!
Thoughts reel of what is behind and ahead.
To be detained politely by a tolling companion.
You are the companion that makes chills rise!
Life goes on so what is this now happening?
Kalanipuka gives so freely,
For the first time I have seen myself,
The sprouting sea of Papalooa,
Swaying upon the sandy shoreline.
Answer me, my lei, my child
The second of the heavenly.

NE'ENE'E MAI 'O KA'ULA

Nāhinu Kamehaokalani Ka'ae
Translated by Mary Kawena Pukui



*Ne'e mai nei 'o Ka'ula,
I ka mole o ka 'āina.*

Ka'ula draws nigh,
To the base of the land.

*'Āina nui 'o Ni'ihau,
Pili wale mai nō 'o Lehua.*

A large land is Ni'ihau,
Lying close to Lehua.

*Ua like nō a like,
Me ke kai 'o Ka'ulakahi.*

It is very much like,
The sea of Ka'ulakahi.

*'Akahi au a 'ike,
I ka li'ulā i ke kula.*

'Twas the first time that I saw,
The mirage on the plain.

*E hulili ana i ke one,
I ka 'ōhai o Kahelu.*

Glistening (waters) on the sand,
By the 'ōhai tree of Kahelu.

*Helu 'ekahi 'o Limaloa,
Konohiki a'o Mānā.*

Limaloa is unexcelled,
The ruler of Mānā.

*Nāna i ho'olale mai,
Kauhale i ke ālialia.*

He alone did build,
The houses on the plain.

*I ahona i ka Nāulu,
Malu ai nā kuahiwi.*

'Twas the Nāulu wind,
That cooled the mountains.

*Hanohano nō 'o Waimea,
I ka ua Kapā'ahoa.*

Majestic is Waimea,
In the rain of Kapā'ahoa.

*A he hoa nō 'oe no'u,
No nā mānowai 'elua.*

You are my companion,
Of the two water sources.

*Ha'ina mai ka puana,
No Kalani nō he inoa.*

The end of my song I sing,
Of my chief.

He inoa no Kawānanakoa.

A name song for Kawānanakoa.

*Princess Abigail's
Community Spirit*



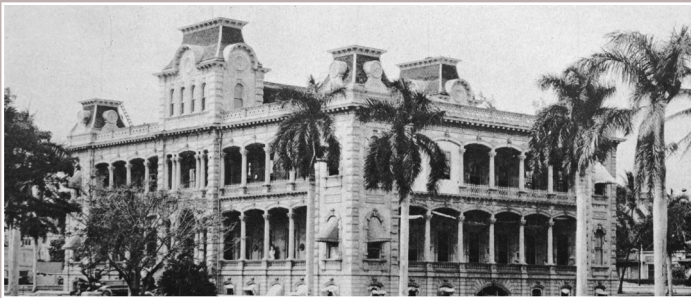
‘Iolani Palace

Princess Abigail was a benevolent patron of Native Hawaiian language, culture and arts, and she gave generously to many individuals and families who sought her charity. Significant amongst Princess Abigail’s many accomplishments will forever be the monumental restoration of ‘Iolani Palace. Our Nation’s only royal palace, it is recognized today as a cultural Hawaiian treasure and world-class museum of distinction.

As befitting her royal lineage and sense of civic duty, Princess Abigail accepted the legacy and vision of her mother HRH Princess Lydia Kamaka‘eha Lili‘uokalani Kawānanakoa Morris, who founded The Friends of ‘Iolani Palace to save from demolition, preserve and restore the home of her royal ancestors.

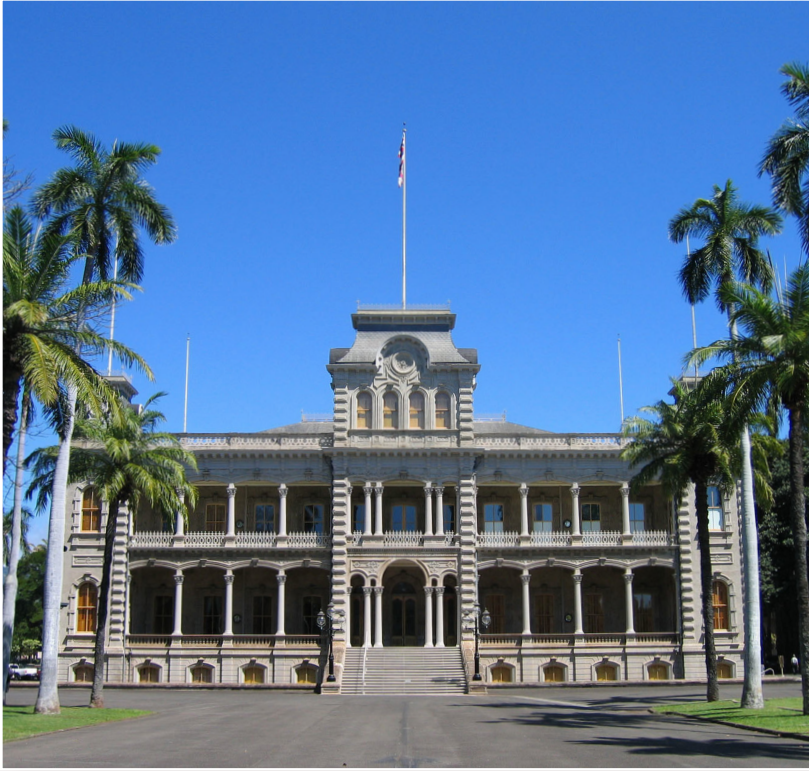
Through tireless leadership and selfless efforts, Princess Abigail strived to rekindle the former grandeur of ‘Iolani Palace as envisioned by King David Kalākaua. In 1983, The Friends of ‘Iolani Palace sponsored a Centennial Coronation Program recreating the 1883 Coronation of King David Kalākaua and as President, Princess Abigail remarked:

“The past, the present and the future are one in the calculus of the ages, but one century ago a spark of brilliance hit the Pacific – a moment of glory was ours and it is that spark, that moment, that we remember today – In this, we are heirs to the treasures of a kingdom and the boundless dreams of a king.”





**PRINCESS LYDIA KAMAKA'EHA LILI'UOKALANI
KAWĀNANAKOA**



Upon hearing her remarks, the late Honorable Senator Daniel K. Inouye conveyed these sentiments about Princess Abigail:

“Princess Kinoiki Kekaulike, a member of the family with the closest blood ties to the Kalākaua Dynasty, spoke very eloquently of the Coronation. Her words were very moving, and they have been with me since I heard them. They hold deep meaning to anyone who loves Hawai‘i, or wishes to truly understand the island’s rich past.”

In 2010, the Historic Hawai‘i Foundation honored Princess Abigail with their prestigious Kama‘āina of the Year Award for her significant efforts to restore and preserve ‘Iolani Palace.

'Aha Pūnana Leo

Understanding the great importance of revitalizing the Native Hawaiian language and recognizing it as the foundation for expressing the diversity and richness of Hawaiian culture, Princess Abigail was a long-time financial supporter and very vocal proponent of the 'Aha Pūnana Leo Hawaiian immersion program.

In December of 2007, 'Aha Pūnana Leo honored Princess Abigail at its Ne'epapa I Ke Ō Mau benefit dinner as part of the twentieth-year anniversary celebration for the Hawaiian Immersion Program in the Hawai'i State Department of Education. She received the Kamakia Award for her patronage and continued support of the program.

The theme, "Ola Nā Mamo: A Living Hawaiian Culture for the Generations," affirms the special bond that Princess Abigail shares with the children of 'Aha Pūnana Leo, be it yesterday, today, or tomorrow. For it is in every generation, in our most treasured asset—our children—that we shall find the keepers of our Past, Present, and Future.



KŌ LEI 'AWAPUHI

Larry Lindsey Kimura | Randie Kamuela Fong



*Aia i ka la'i a'o Waimānalo
Kō lei 'awapuhi ke'oke'o
'Uo 'ia i nā mānai pālua
I pāpahi mikioi no ka wahine*

There in the serenity of Waimānalo
Is your white ginger lei
Strung onto double lei needles
To fashion a pleasing elegance for the woman

*No ke ali'i pu'uwai aloha
Na 'ōpu'u pua mili lima
I makalapua i ka uka 'iu
I ka pai ho'olale a Līhauanu*

It is for the gracious princess
Flower buds which are gently caressed
Opening into full bloom at their upland garden
At the lively urging of Līhauanu - 'Mountains
cool dew'

*Anuheā kō 'ala e moani nei
Me he hāili 'ōpua i ka la'i
He kilohana ke ali'i aloha
I ke aukāhi ho'ōla leo kupuna*

So fresh is your fragrance lifted into the air
Like serene soft clouds that bring to mind
That a caring noble is a choice supporter
In renewing the life of our ancestral language

*Māpuna mai ana lā nā hali'a
I ka poli wainohia o ka makua
'O ka 'oi nō ia o ka pālama
He malu hānai na 'Apikaila*

The sweet scented breeze stirs fond recollections
Of a closeness of loving guardianship
When only the best was afforded in care
For the cherished one of Ms. Abigail

*Puana 'ia mai ne kihene pua
Kō lei 'awapuhi ke'oke'o
'Uo 'ia i nā mānai pālua
I pāpahi mikioi no ka wahine*

Bring forth the basket of flowers
Your white ginger lei
Strung onto double lei needles
To fashion a pleasing elegance for the woman

E ō e Ke Kamāli'i Wahine Kekau

Your tribute to honor, Princess Kekau

In the tradition of Mele Lei, this song emulates the qualities of a particular lei associated with the honoree. Fashioned with ginger from Waimānalo by master lei maker Barbara Mehe'ula, this special tribute weaves together both lei and mele to honor Princess Kekaulike.

Merrie Monarch Festival

During his eulogy at her funeral, Kahu Kamaki Kanahale spoke of Princess Abigail's love for hula and her insistence that it always be perpetuated. He told of a meeting many years ago with her very close friends 'Iolani Luahine, George Na'ope, Dottie Thompson, his mother Agnes Cope and himself, where Princess Abigail asked about what she had heard they were planning for Hilo. They described for her what we today know as the Merrie Monarch Hula Festival, and Kekau immediately promised and provided financing for it. "If not for Kekau," he said, "none of this would exist. And for that we will always be grateful."

She regularly attended the Festival as a living representative of the Kalākaua Dynasty and its founder and namesake, her great-granduncle King David Kalākaua. The welcome recognition of her presence in the festival program and by the festival audience honored the great vision and legacy of Kalākaua. Whenever the Princess was escorted to and from her seat of honor, the audience would stand in silence. This gesture of reverence and respect honored the Princess, and by extension, very much the King himself.

Over the years, Princess Abigail nurtured a personal relationship with the Royals throughout Polynesia. In 1984, representing the Royal Families of Hawai'i and Tahiti, Princess Abigail attended the 21st Annual Merrie Monarch Festival with an entourage that included Princess Genevieve "Tita" Pomare, the granddaughter of Pomare V, the last reigning monarch of Tahiti.

As the Festival grew, Princess Abigail's support focused more and more on the hula hālau and their kumu. There were regular cash gifts to support the hālau that performed at the Festival, as well as more personal and specific support of various kinds for individual kumu.

Marking the 50th Anniversary of the Merrie Monarch Festival, Princess Abigail was pleased to present Executive Director Luana Kāwelu a personal makana in memory of her dear friends Na'ope and Thompson.



HRH Princess Abigail Kinoiki Kekaulike Kawānanakoa, escorted by HRH Prince David Klaren Kaumuali'i Kawānanakoa on the occasion of the 50th Anniversary of the Merrie Monarch Festival in Hilo, Hawai'i.

*Princess Abigail's
Horses*



He Wahine Holo Lio

Princess Abigail was an accomplished equestrienne and well-respected businesswoman known throughout the quarter horse racing community as “Ms. Abigail.” An owner, trainer and world-class champion breeder, she candidly shared her personal relationship with her elite breeding stock of champion mares and stallions:

“I love these horses more than life itself. I delight in them. They deserve our love. They deserve the best we can give them. We domesticated them. They are the part of our lives that make us better people.”

Sole proprietor of the Lakeview Quarter Horse Farm in Nuevo, California, Princess Abigail became involved in American quarter horse racing in the 1970s and bred her first quarter horse in 1980. In 1989, her first homebred stakes winner, “Royal Trips,” became the first of more than 350 winners bred in Ms. Abigail’s own name.

Amongst Ms. Abigail’s great achievements was winning the 1993 All American Futurity with her two-year-old chestnut colt, “A Classic Dash,” who ran the 440-yard race in 21.51 seconds at Ruidoso Downs, New Mexico. Notably, Princess Abigail’s trainer, Connie Hall, became the first woman to win the All American Futurity.

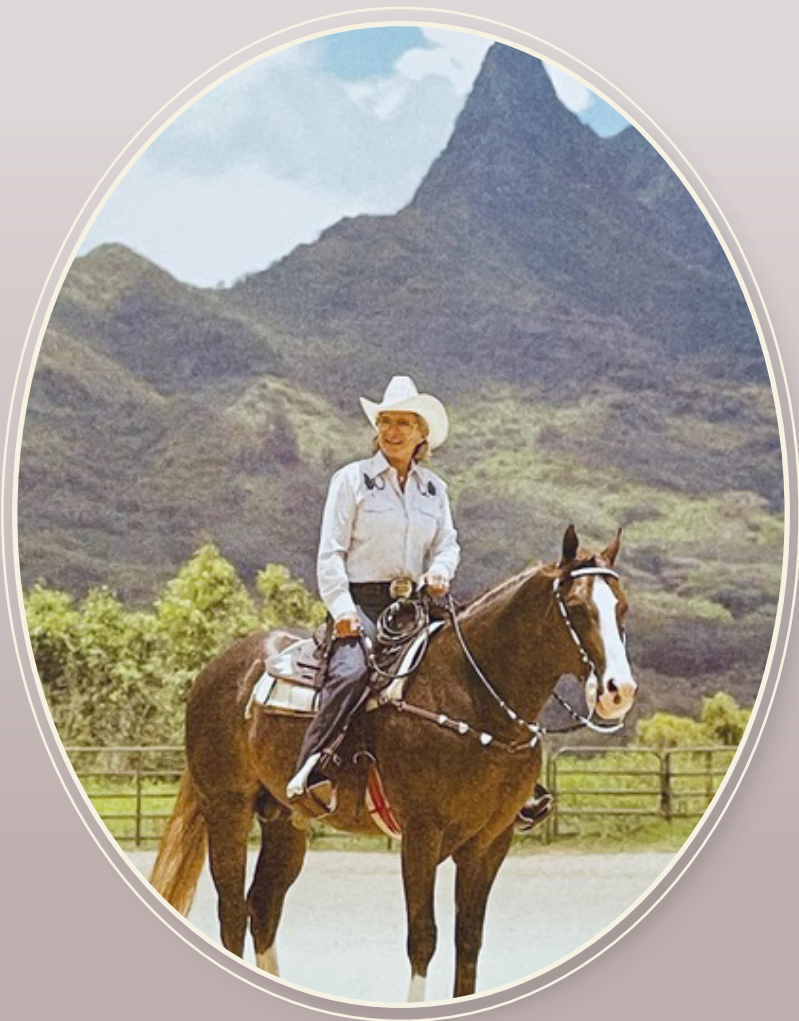


In succeeding years, Princess Abigail was named AQHA Champion Owner in 1994 and 1995 and continued to reign as one of the sport's top owners and breeders. In 1996, Princess Abigail's three-year-old gray gelding, "Evening Snow," broke a 23-year-old world record by running the 440-yard race in 20.94 seconds to win the AQHA West / Southwest Challenge Championship at Turf Paradise in Phoenix, Arizona.

To date, foals bred by Princess Abigail have won \$9.89 million on the track, producing four world champions that have won five world championships. In 2012, Princess Abigail was duly honored by the Pacific Coast Quarter Horse Racing Association for her major contributions to the sport and in 2018 she was inducted into the American Quarter Horse Hall of Fame.

As a respected, long-standing member of the American Quarter Horse Association, Princess Abigail in 2021 was honored to have a 400-yard stake race at the Los Alamitos Racecourse named the "\$100,000 Abigail Kawānanakoa Stakes."





*Princess Abigail on horseback at A-TRI-K stables in
Waimānalo, O'ahu*



A steadfast proponent of equine preventative treatment and rehabilitation, Princess Abigail in 2007 granted an endowment of \$3 million to Colorado State University (CSU) to create the Abigail K. Kawānanakoa University Chair in Equine Musculoskeletal Integrative Therapies. In May of 2016, Princess Abigail received an honorary doctorate from CSU in recognition of her dedication to global equine health. The following year, Princess Abigail committed \$20 million in support of CSU's C. Wayne McIlwraith Translational Medicine Institute and its pioneering discoveries in equine medicine and orthopedic research.

“She will be deeply missed, but importantly, Princess Kawānanakoa will continue to make a difference in our lives because of her generosity to Colorado State University as well as her beloved Hawai'i. Through her support of Colorado State's research in the health of horses, and our mutual commitment to translational medicine to advance human health, the Princess's work carries on, even in her absence.”

- CSU Interim President Rick Miranda



Princess Abigail as Pa'u Queen, 1978 Aloha Week Parade

Her Songs



HE INOA LEI NO KINOIKI KEKAULIKE

J. Kimo Alama Keaulana

Composed in honor of Princess Abigail Kinoiki Kekaulike Kawānanakoa by Kimo Alama Keaulana on July 20, 2017. Hawaiians believe that a lei of poetry never withers and that sweetness and fragrance entice the blessings of the heavenly realm to be with us; beauty attracts beauty.



He inoa he lei no nēia,
This is a praise, an adornment,

No ka lani Kinoiki Kekaulike.
For the royal one, Kinoiki Kekaulike.

‘O ke onaona ‘awapuhi ke‘oke‘o,
The fragrances of white ginger,

E moani mau nei i kou alo.
Always lingers about in your presence.

‘Ohu‘ohu ho‘i ‘oe i ka lei ‘ilima,
You also are adorned with the lei ‘ilima,

Kohu i ke ali‘i i aloha nui ‘ia.
Befitting a chiefess so dearly loved.

Ua wehiwehi ‘oe i nā kapu,
You are adorned with kapu,

Mai o kūpuna hulu lani mai,
From your royal and precious ancestors,

E ola mau ‘oe a mau loa,
May you live long,

‘O ka lani Kinoiki Kekaulike.
Oh royal one, Kinoiki Kekaulike.

HE MELE INOA NO KEKAULIKE KAWĀNANAKOA

A Name Song For Princess Kekaulike Kawānanakoa

John Renken Kaha‘i Topolinski



He mele kēia nou e u‘i la
This is your song o beautiful lady

O Kekaulike he inoa ē
For thou art Kekaulike – The blossom of Kapi‘olani

‘O ‘oe nō ka nani i ka‘u ‘ike
Thou art the beauty my eyes behold

O ka nani lua‘ole o Hawai‘i nei
O lovely beauty of Hawai‘i here.

O ka helu ‘ekahi o ke ‘ala nohea
Exquisite is your sweetness

He ‘a‘ala o ka ‘ilima i ku‘u poli la
A marvelous fragrance held in my arms

Nānā e ‘Iolani o Hale-ali‘i kapu
[I] gaze upon ‘Iolani of the Royal Palace

Ka paepae kapu o Kapi‘olani ali‘i
The sacred foundation of Chiefess Kapi‘olani

Puana ka inoa i lohe ‘ia
Respond to your name song

O Kekaulike ali‘i kapu he nohea ē

This song was presented on April 28, 1984 as a gift to commemorate HRH Princess Abigail Kinoiki Kekaulike Kawānanakoa's 58th birthday.



HAOLE HULA

Robert Alexander Anderson



Oh when I hear the strains of that sweet 'Alekoki
And stealing from a far off guitar penei nō
When Lili'u ē makes you sway in the moonlight
I know the reason why fair Hawai'i haunts you so

The lovely blue of sky and the sapphire of ocean
The flashing white of clouds and of waves foaming crest
The many shades of green from the plain to the mountain
With all the brightest hues of the rainbow we're blest

I hear the swish of rain as it sweeps down the valley
I hear the song of wind as it sighs through the trees
I hear the crash of waves on the rocks and the beaches
I hear the hissing surf and the boom of the sea.

I love to dance and sing of the charms of Hawai'i
And from a joyful heart sing "Aloha" to you
In every note I'll tell of the spell of my islands
For then I know that you'll be in love with them too.

Often accompanied by the musical talents of her dearest friends Edwin Mahi'ai Beamer and Helen "Sunbeam" Ka'alo'ehukaiopua'ena Beamer, Princess Abigail adopted this R. Alex Anderson song as her signature "hula" and with great anticipation, she often shared her joyful animation of the "boom" of the sea.



ON A CLEAR DAY

Alan Jay Lerner | Burton Lane



On a clear day,
rise and look around you,
And you'll see who you are.
On a clear day,
how it will astound you
That the glow of your being
Outshines ev'ry star.
You feel part of ev'ry mountain, sea and shore;
You can hear, from far and near,
A world you've never heard before;
And on that clear day,
On that clear day,
You can see for ev – er and ev – er more.
You can see for-ev – er and ever
And ever and ev – er more.

Princess Abigail enjoyed this Broadway tune and when she desired to hear it, she would simply pick up her phone and call Ms. Nina Keali'iwahamana who happily sang it to her a cappella.



PUA TUBEROSE

Kimo Kamana



E kau mai ana ka hali'a
A fond memory comes to me

No sweet tuberose poina 'ole
Of the sweet tuberose, so unforgettable

Me he ala e 'i mai ana ia'u
Like fragrance, it speaks to me

He welina pau 'ole me ia pua
Forever greeting this flower with affection

Aloha ku'u pua 'ala onaona
Love for this sweet fragrant flower

I wili 'ia me maile lau li'i
Entwined with small leaf maile

Ke hea nei ku'u lei 'ala onaona
Where is this lei of mine, so fragrant?

E ho'i mai k'aua la e pili
Return and let us be together

Ha'ina 'ia mai ana ka puana
The story is told

Ku'u pua tuberose poina 'ole
Of my unforgettable tuberose

AIA I MA'EMA'E KŌ LEI NANI

Charles Albert Manu'aikohana Boyd



Aia i Ma'ema'e kō lei nani

There at Ma'ema'e, Nu'uaniu, is your lovely adornment

Ka 'ilima lei ali'i kau po'ohiwi

Of royal 'ilima blossoms, regally worn

Kuikui 'ia e ka Puahiohio

Strung with care by the Puahiohio wind

Ka makani kupa o ia uka Nu'uaniu

That breeze that refreshes the uplands of Nu'uaniu

Anuheka ka moani o ka 'awapuhi

Perfume of ginger in the cool mountain air

'Oi aku ho'i ke wilia me ka maile

Is even sweeter when mingled with maile lau li'ili'i

E maliu mai e ke kāmakahala

Your attention, O golden Kāmakahala, is now my desire

I wewehi paukū me ka 'āhihi

With scarlet 'āhihi, you'll complete my adornment

Ho'ohihi ka mana'o hāli'ali'a

My thoughts are captured in fond recollection

No ke 'ano luakaha o ke kuahiwi

Of the hospitality and charm Hawai'i, our home

Hanohano ho'i kau Nā Kai 'Ewalu

Glorious, the splendor of "The Eight Ocean Channels"

Home 'ailana ua mālmalama

Our islands, our homeland, aglow in the sea

NANI MAU LEI PUA KENIKENI

O'Brian T. Eselu



Sweet lei pua kenikeni, he u'i no 'oe
Sweet lei pua kenikeni, you are so lovely

E 'ike au I kou nani, I ka pua nani lua'ole
I behold your beauty, beautiful flower beyond compare

Moani ke 'ala a ka lei pua kenikeni
Wind borne fragrance of the lei pua kenikeni

Kou 'ala onaona piha nui me kealoha
Your fragrance so lovely filled with much love

I kui i lei no lima no'eau
Skillful hands string the lei

E kui'oe e kui au I lei no taua
You string, I string a lei for you and I

Mahalo a nui loa ia 'oe ka lei aloha
Much gratitude to you the lei of love

E pomaika'i no 'oe mai i anela
You are indeed a blessing from the angels

Ha'ina ka puana me ke aloha, sweet lei pua kenikeni
Told is the refrain with affection lei pua kenikeni

E 'ike au I kou nani, I ka pua nani lua'ole
I behold your beauty, beautiful flower beyond compare

I ka pua nani lua'ole
Beautiful flower beyond compare

Sweet Lei Puakenikeni

This mele was inspired by and presented to Princess Abigail Kinoiki Kekaulike Kawānanakoa on April 30, 2013, in appreciation and gratitude for her kindness and thoughtful gift of two lei pua kenikeni made from the flower garden of her Nu'uaniu estate.

Farewell Princess



Ke Kapu O Iwikauikaua

Kukui 'ā mau i ke awakea.

Torch that continues to burn in daylight.

A symbol of the family of Iwikauikaua.

After his daughter was put to death by one of his wives, this chief made a tour of the island of Hawai'i with torches burning day and night. This became a symbol of his descendants, who included Kalākaua and Lili'uokalani.

'Olele No'eau #1904

HO'ONANI I KA MAKUA MAU (Doxology)

Rev. Hiram Bingham | Louis Bourgeois



Ho'onani i ka Makua Mau,
Praise God from whom all blessings flow,

Ke Keiki me ka 'Uhane nō,
To the Son and the Holy Ghost

Ke Akua Mau ho'omaika'i pū,
To God everlasting, let there be praise

Kō kēia ao, kō kēlā ao.
Both in this world as well as the Kingdom

'Āmene.
Amen.

KA PULE A KA HAKU

(THE LORD'S PRAYER)



E ko mākou Makua i loko o ka lani,
Our Father, who art in heaven,

E ho āno 'ia kou inoa.
Hallowed be Thy name.

E hiki mai kou aupuni;
Thy kingdom come;

E mālama 'ia kou makemake ma ka honua nei,
Thy will be done on earth,

E like me ia i mālama 'ia ma ka lani lā.
As it is in heaven.

E hā'awi mai iā mākou i kēia lā , i 'ai na mākou no neia lā.
Give us this day our daily bread.

E kala mai ho'i iā mākou i kā mākou lawehala 'ana,
and forgive us our debts,

Me mākou e kala nei i ka po'e i lawehala i kā mākou.
as we forgive our debtors.

Mai ho'oku'u 'oe iā mākou i ka ho'owalewale 'ia mai,
and lead us not into temptation,

E ho'opakele nō na'e iā mākou i ka 'ino;
but deliver us from evil;

No ka mea, Nou ke aupuni, a me ka mana,
for Thine is the kingdom, and the power,

A me ka ho'onani 'ia ā mau loa aku
and the glory forever.

Āmene.
Amen.

HAWAI‘I PONO‘Ī



Hawai‘i pono‘ī
Nānā i kou mō‘ī
Ka lani ali‘i,
Ke ali‘i

HUI:
Makua lani ē,
Kamehameha ē,
Na kaua e pale,
Me ka ihe

Hawai‘i pono‘ī
Nānā i nā ali‘i
Nā pua muli kou
Nā pōki‘i

Hawai‘i pono‘ī
E ka lāhui e
‘O kāu hana nui
E ui ē

ALOHA 'ŌE
(FAREWELL TO THEE)

Queen Lili'uokalani



*Ha'aheo ka ua i nā pali
Ke nihi a'ela i ka nahele
E hahai ana paha i ka liko
Pua 'āhihi lehua o uka*

Proud is the rain upon the cliffs
Creeping silently through the trees
In pursuit of the leaf buds
The 'āhihi lehua of the uplands

*Hui:
Aloha 'oe, aloha 'oe
E ke onaona noho i ka lipo
One Fond embrace
A ho'i a'e au
Until we meet again*

Chorus:
Farewell to you, farewell to you
Fragrant one dwelling in the lushness
One Fond embrace
Before I leave
Until we meet again

*'O ka hali'a aloha i hiki mai
Ke hone a'e nei i ku'u manawa
'O 'oe nō ka'u ipo aloha
A lolo e hana nei*

Loving remembrance that comes to me
Sweetly stirs my emotions
You are my beloved sweetheart
Dwelling here in my heart

*Maopopo ku'u 'ike i ka nani
Nā pua rose o Maunawili
I laila hia'ai nā manu
Miki'ala i ka nani o ka lipo*

Clearly I have known your beauty
The rose blossoms of Maunawili
And 'tis there do birds delight
Alert to the beauty of the leaf buds



